

	PETROL 95 ULP	PETROL 93 ULP & LRP	DIESEL 0.05%	DIESEL 0.005%	ILL. PAR.
GAUTENG PUMP PRICE (SA c/l) AS FROM 03/06/2020	1,340.000	1,320.000	-	-	-
WHOLESALE PRICE (SA c/l) AS FROM 03/06/2020	-	-	1,130.560	1,138.960	489.828
SINGLE NATIONAL MAXIMUM RETAIL PRICE	-	-	-	-	597.000
BASIC FUEL PRICE - 05/06/2020 (SA c/l)	537.767	516.617	532.190	536.493	477.089
PRESS RELEASE CONTRIBUTION TO BFP 03/06/2020 - 05/06/2020 (SA c/l)	392.770	382.770	379.630	388.030	285.128
UNIT OVER/(UNDER) RECOVERY - 05/06/2020 (SA c/l)	(144.997)	(133.847)	(152.560)	(148.463)	(191.961)
AVERAGE BASIC FUEL PRICE 29/05/2020 - 05/06/2020	505.514	484.056	506.105	510.736	452.788
AVERAGE UNIT OVER/(UNDER) RECOVERY 29/05/2020 - 05/06/2020	(171.744)	(160.286)	(137.475)	(133.206)	(187.660)

ANALYSIS MOVEMENT OF AVERAGE OVER/(UNDER) RECOVERY

- MOVEMENT IN INTERNATIONAL PRODUCT PRICES

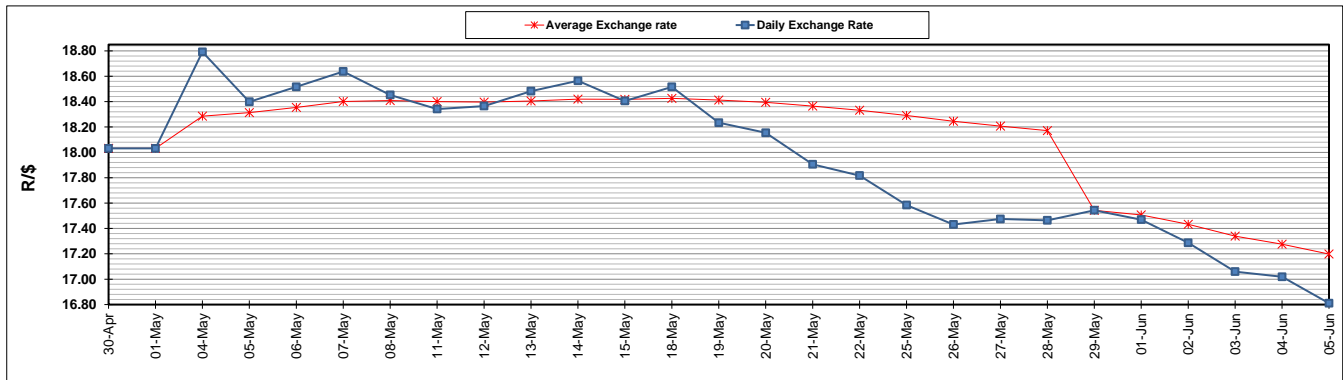
- MOVEMENT IN EXCHANGE RATE

AVERAGE UNIT OVER/(UNDER) RECOVERY 29/05/2020 - 05/06/2020

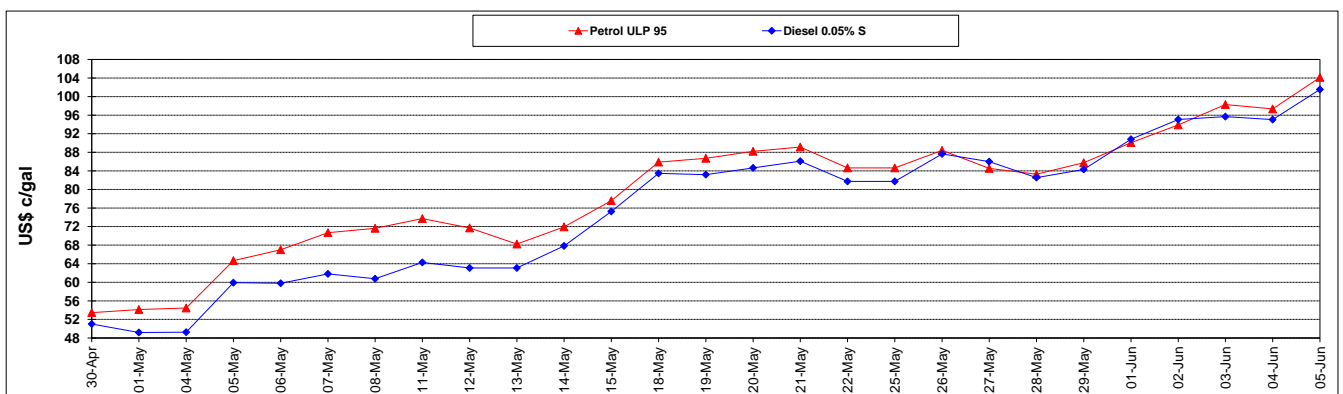
	PETROL 95	PETROL 93	DIESEL 0.05%	DIESEL 0.005%	ILL. PAR.
- MOVEMENT IN INTERNATIONAL PRODUCT PRICES	(200.353)	(187.680)	(166.117)	(162.110)	(213.285)
- MOVEMENT IN EXCHANGE RATE	28.609	27.394	28.642	28.904	25.625
AVERAGE UNIT OVER/(UNDER) RECOVERY 29/05/2020 - 05/06/2020	(171.744)	(160.286)	(137.475)	(133.206)	(187.660)

R/\$ EXCHANGE RATE - (R/\$16.8107 - 05/06/2020)

EXCHANGE RATE USED IN BASIC FUEL PRICE



INTERNATIONAL PRODUCT PRICES OF BASKET USED IN BASIC FUEL PRICE



BASIC FUEL PRICE IN SA CENTS PER LITRE

